

4

3

2

1

MOTOR SPECIFICATIONS:			
FRAME SIZE:	NEMA 14	ROTOR INERTIA (g-cm ² /oz-in ²):	35.3/0.193 NOM
STEP ACCURACY (°)	± 0.09	INSULATION CLASS:	B (130°)
STEP ANGLE (°):	1.8	BEARINGS:	ABEC 3, DOUBLE SHIELDED
INPUT VOLTAGE(VDC):	42.5 TO 57	APPROVALS:	CE, RoHS

GEARMOTOR SPECIFICATIONS:			
TEMP. RISE (°C):	80 MAX	TOTAL WEIGHT (±10g/±0.35oz):	606.7/21.4
OPERATING AMB. TEMP. RANGE (°C):	-20 to +50	RELATIVE HUMIDITY RANGE (%):	85 NON-CONDENSING
STORAGE TEMP. RANGE (°C):	-20 to +70	IP RATING	IP20


GEARHEAD SPECIFICATIONS:			
RATIO:	12.07:1	EFFICIENCY (%):	81
MAX TORQUE CONTINUOUS (Nm/oz-in):	8/1132.9	BACKLASH (°):	≤1.2
MAX TORQUE (Nm/oz-in):	10/1416.1	MAX RADIAL LOAD (N/lbf):	≤200/44.96
MAX INPUT SPEED (RPM):	6000	MAX AXIAL LOAD (N/lbf):	≤200/44.96

GEARHEAD MATERIALS	
GEARTRAIN:	Y15(1213) STEEL
HOUSING:	304 STAINLESS STEEL
INPUT/OUTPUT FLANGE:	LY12 ALUMINUM
OUPTUT SHAFT:	40Cr STEEL
PINION:	Y15 (1213) STEEL

NOTES, UNLESS OTHER WISE SPECIFIED:

1. USE CURRENT REV OF 690-1274 LABEL.
2. USE CURRENT REV OF 690-1279 LABEL.
3. USE CURRENT REV OF 690-1280 LABEL.
4. USE CURRENT REV OF 690-1285 LABEL.
5. THIS ASSEMBLY IS MANUFACTURED IN COMPLIANCE WITH THE CURRENT EU RoHS DIRECTIVE.
6. ALL SPECIFICATIONS AND OPERATING INSTRUCTIONS CAN BE FOUND AT APPLIED-MOTION.COM.

REVISIONS				
ECO #	REV.	DESCRIPTION	DATE	APPROVED
7935	A	INITIAL RELEASE	7/2/18	J.KORDIK
8750	B	REDRAWN IN SOLIDWORKS	2/15/22	L. LIU

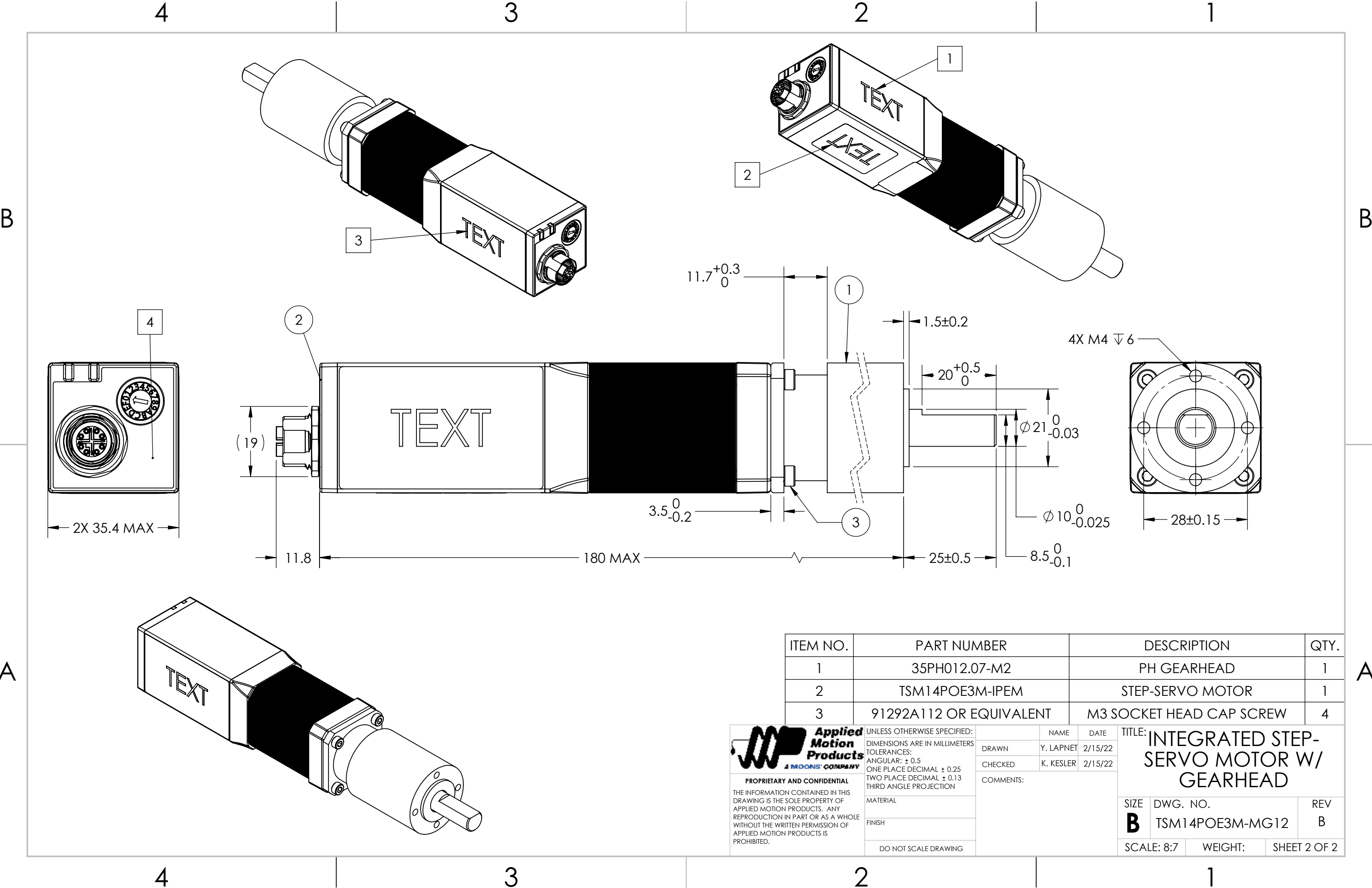
<div><div><div>Applied Motion Products</div><div>A MOONS' COMPANY</div></div></div> <div>PROPRIETARY AND CONFIDENTIAL</div> <div>THE INFORMATION CONTAINED IN THIS DRAWING IS THE SOLE PROPERTY OF APPLIED MOTION PRODUCTS. ANY REPRODUCTION IN PART OR AS A WHOLE WITHOUT THE WRITTEN PERMISSION OF APPLIED MOTION PRODUCTS IS PROHIBITED.</div>	UNLESS OTHERWISE SPECIFIED:			NAME		DATE		TITLE: INTEGRATED STEP-SERVO MOTOR W/ GEARHEAD				
	DIMENSIONS ARE IN MILLIMETERS			DRAWN		Y. LAPNET					2/15/22	
	TOLERANCES: ANGULAR: ± 0.5 ONE PLACE DECIMAL ± 0.25 TWO PLACE DECIMAL ± 0.13 THIRD ANGLE PROJECTION			CHECKED		K. KESLER					2/15/22	
	MATERIAL			COMMENTS:								
	FINISH											
DO NOT SCALE DRAWING			SIZE DWG. NO. REV B TSM14POE3M-MG12 B									
			SCALE: 8:7		WEIGHT:		SHEET 1 OF 2					

4


3

2

1



ITEM NO.	PART NUMBER	DESCRIPTION	QTY.
1	35PH012.07-M2	PH GEARHEAD	1
2	TSM14POE3M-IPEM	STEP-SERVO MOTOR	1
3	91292A112 OR EQUIVALENT	M3 SOCKET HEAD CAP SCREW	4



Applied Motion Products
A MOONS' COMPANY

PROPRIETARY AND CONFIDENTIAL
THE INFORMATION CONTAINED IN THIS DRAWING IS THE SOLE PROPERTY OF APPLIED MOTION PRODUCTS. ANY REPRODUCTION IN PART OR AS A WHOLE WITHOUT THE WRITTEN PERMISSION OF APPLIED MOTION PRODUCTS IS PROHIBITED.

UNLESS OTHERWISE SPECIFIED:
DIMENSIONS ARE IN MILLIMETERS
TOLERANCES:
ANGULAR: ± 0.5
ONE PLACE DECIMAL ± 0.25
TWO PLACE DECIMAL ± 0.13
THIRD ANGLE PROJECTION

MATERIAL	
FINISH	
DO NOT SCALE DRAWING	

NAME	Y. LAPNET	DATE	2/15/22
DRAWN	K. KESLER	CHECKED	2/15/22
COMMENTS:			

TITLE: INTEGRATED STEP-SERVO MOTOR W/ GEARHEAD

SIZE	DWG. NO.	REV
B	TSM14POE3M-MG12	B

SCALE: 8:7	WEIGHT:	SHEET 2 OF 2
------------	---------	--------------