

4

3

2

1

MOTOR SPECIFICATIONS:			
FRAME SIZE:	NEMA 14	ROTOR INERTIA (g-cm <sup>2</sup> /oz-in <sup>2</sup> ):	35.3/0.193 NOM
STEP ACCURACY (°)	± 0.09	INSULATION CLASS:	B (130°)
STEP ANGLE (°):	1.8	BEARINGS:	ABEC 3, DOUBLE SHIELDED
INPUT VOLTAGE(VDC):	42.5 TO 57	APPROVALS:	CE, RoHS

GEARMOTOR SPECIFICATIONS:			
TEMP. RISE (°C):	80 MAX	TOTAL WEIGHT (±10g/±0.35oz):	553.7/19.5
OPERATING AMB. TEMP. RANGE (°C):	-20 to +50	RELATIVE HUMIDITY RANGE (%):	85 NON-CONDENSING
STORAGE TEMP. RANGE (°C):	-20 to +70	IP RATING	IP20


GEARHEAD SPECIFICATIONS:			
RATIO:	5.70:1	EFFICIENCY (%):	90
MAX TORQUE CONTINUOUS (Nm/oz-in):	2/283	BACKLASH ( ° ):	≤0.8
MAX TORQUE (Nm/oz-in):	3/424.8	MAX RADIAL LOAD (N/lbf):	≤200/44.96
MAX INPUT SPEED (RPM):	6000	MAX AXIAL LOAD (N/lbf):	≤200/44.96

GEARHEAD MATERIALS	
GEARTRAIN:	Y15(1213) STEEL
HOUSING:	304 STAINLESS STEEL
INPUT/OUTPUT FLANGE:	LY12 ALUMINUM
OUPTUT SHAFT:	40Cr STEEL
PINION:	Y15 (1213) STEEL

NOTES, UNLESS OTHER WISE SPECIFIED:

1. USE CURRENT REV OF 690-1274 LABEL.
2. USE CURRENT REV OF 690-1279 LABEL.
3. USE CURRENT REV OF 690-1280 LABEL.
4. USE CURRENT REV OF 690-1285 LABEL.
5. THIS ASSEMBLY IS MANUFACTURED IN COMPLIANCE WITH THE CURRENT EU RoHS DIRECTIVE.
6. ALL SPECIFICATIONS AND OPERATING INSTRUCTIONS CAN BE FOUND AT [APPLIED-MOTION.COM](http://APPLIED-MOTION.COM).

REVISIONS				
ECO #	REV.	DESCRIPTION	DATE	APPROVED
7935	A	INITIAL RELEASE	7/2/18	J.KORDIK
8750	B	REDRAWN IN SOLIDWORKS	2/15/22	L. LIU

 <b>Applied Motion Products</b> <small>A MOONS COMPANY</small>	UNLESS OTHERWISE SPECIFIED:		NAME		DATE	
	DIMENSIONS ARE IN MILLIMETERS		DRAWN	Y. LAPNET	2/15/22	
	TOLERANCES: ANGULAR: ± 0.5 ONE PLACE DECIMAL ± 0.25 TWO PLACE DECIMAL ± 0.13 THIRD ANGLE PROJECTION		CHECKED	K. KESLER	2/15/22	
	MATERIAL		COMMENTS:			
FINISH						
DO NOT SCALE DRAWING						

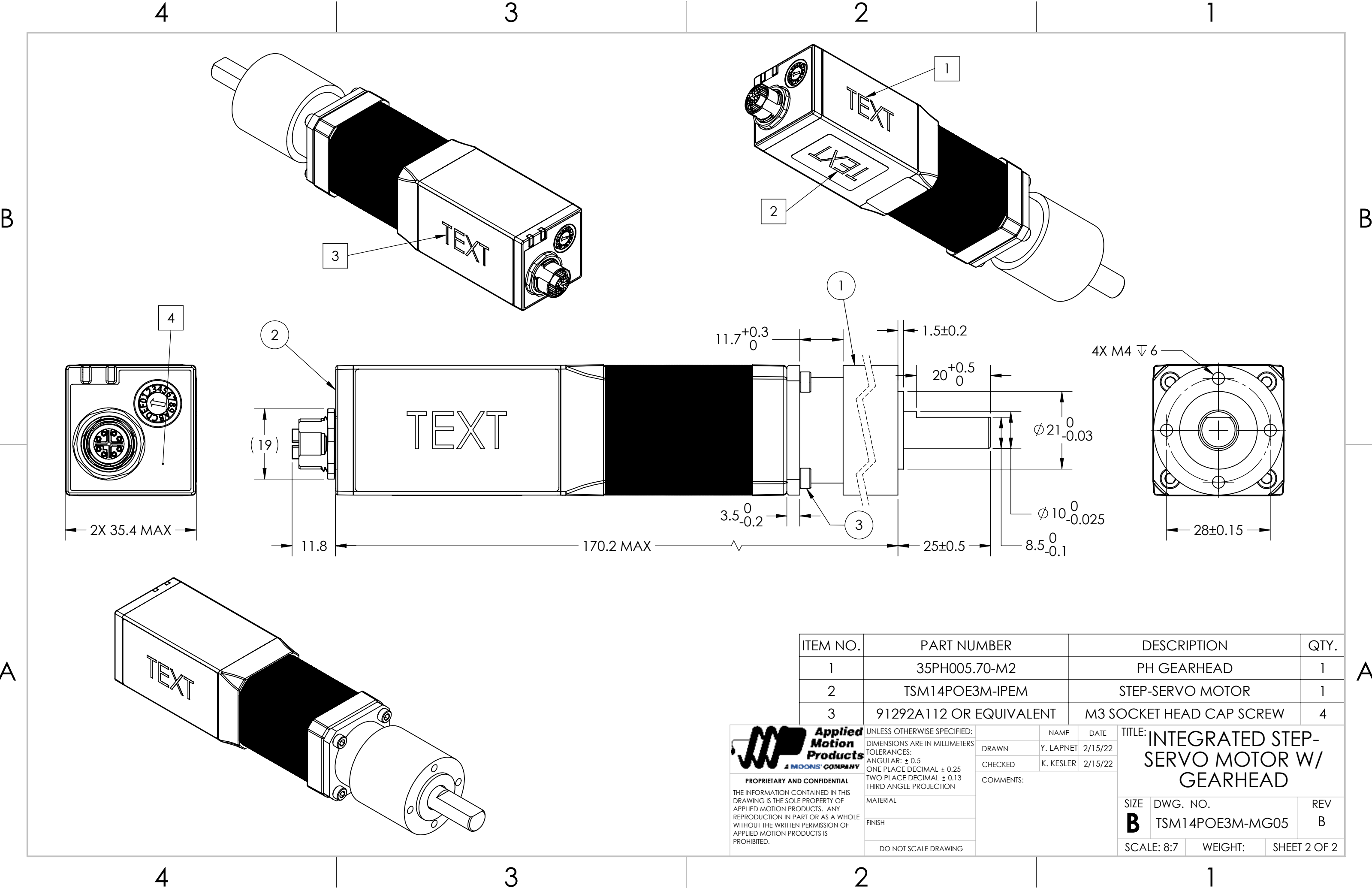
TITLE: INTEGRATED STEP-SERVO MOTOR W/ GEARHEAD					
SIZE		DWG. NO.			REV
<b>B</b>		TSM14POE3M-MG05			B
SCALE: 8:7		WEIGHT:		SHEET 1 OF 2	

4


3

2

1



ITEM NO.	PART NUMBER	DESCRIPTION	QTY.
1	35PH005.70-M2	PH GEARHEAD	1
2	TSM14POE3M-IPEM	STEP-SERVO MOTOR	1
3	91292A112 OR EQUIVALENT	M3 SOCKET HEAD CAP SCREW	4

 <div>Applied Motion Products A MOONS' COMPANY</div>	UNLESS OTHERWISE SPECIFIED: DIMENSIONS ARE IN MILLIMETERS TOLERANCES: ANGULAR: ± 0.5 ONE PLACE DECIMAL ± 0.25 TWO PLACE DECIMAL ± 0.13 THIRD ANGLE PROJECTION		NAME	DATE	TITLE: INTEGRATED STEP-SERVO MOTOR W/ GEARHEAD			
			DRAWN	Y. LAPNET				2/15/22
			CHECKED	K. KESLER				2/15/22
			COMMENTS:					
<div>PROPRIETARY AND CONFIDENTIAL</div> <div>THE INFORMATION CONTAINED IN THIS DRAWING IS THE SOLE PROPERTY OF APPLIED MOTION PRODUCTS. ANY REPRODUCTION IN PART OR AS A WHOLE WITHOUT THE WRITTEN PERMISSION OF APPLIED MOTION PRODUCTS IS PROHIBITED.</div>	MATERIAL		SIZE DWG. NO. REV B TSM14POE3M-MG05 B					
	FINISH							
	DO NOT SCALE DRAWING							
			SCALE: 8:7		WEIGHT:		SHEET 2 OF 2	