

4

3

2

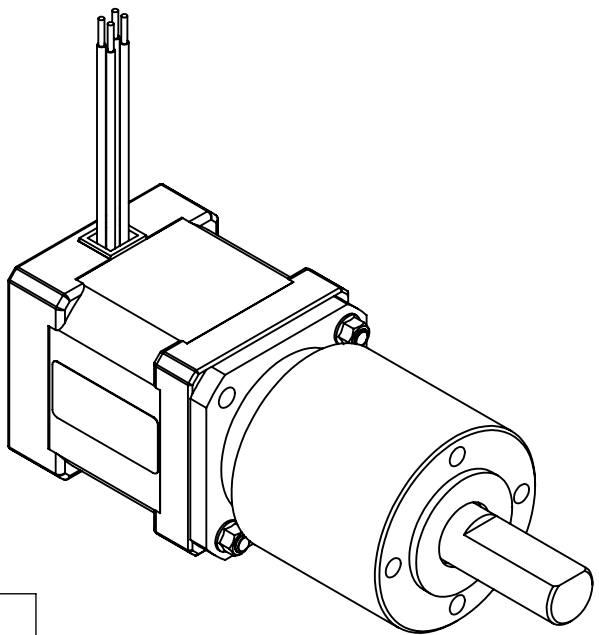
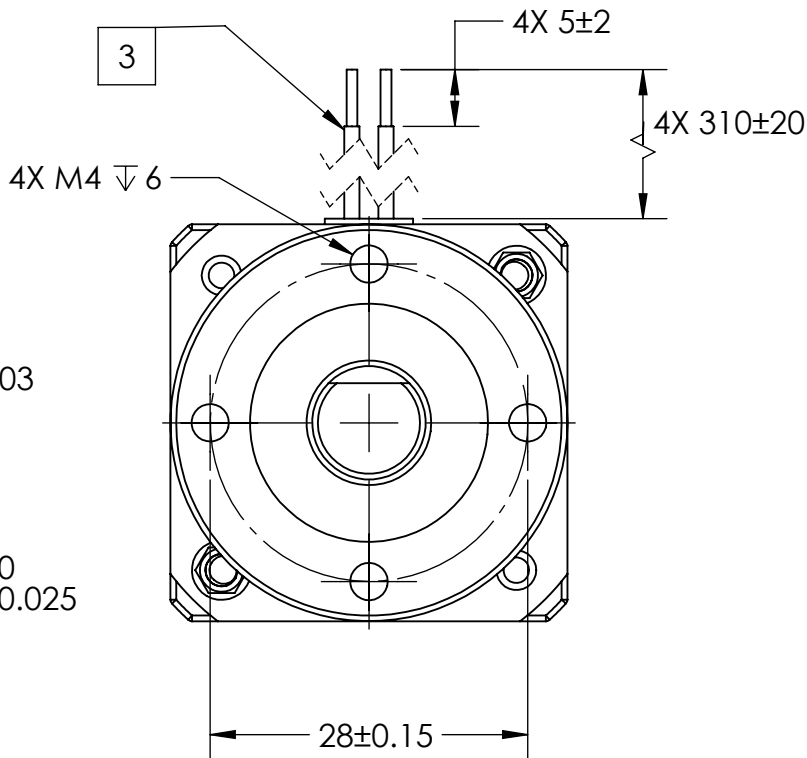
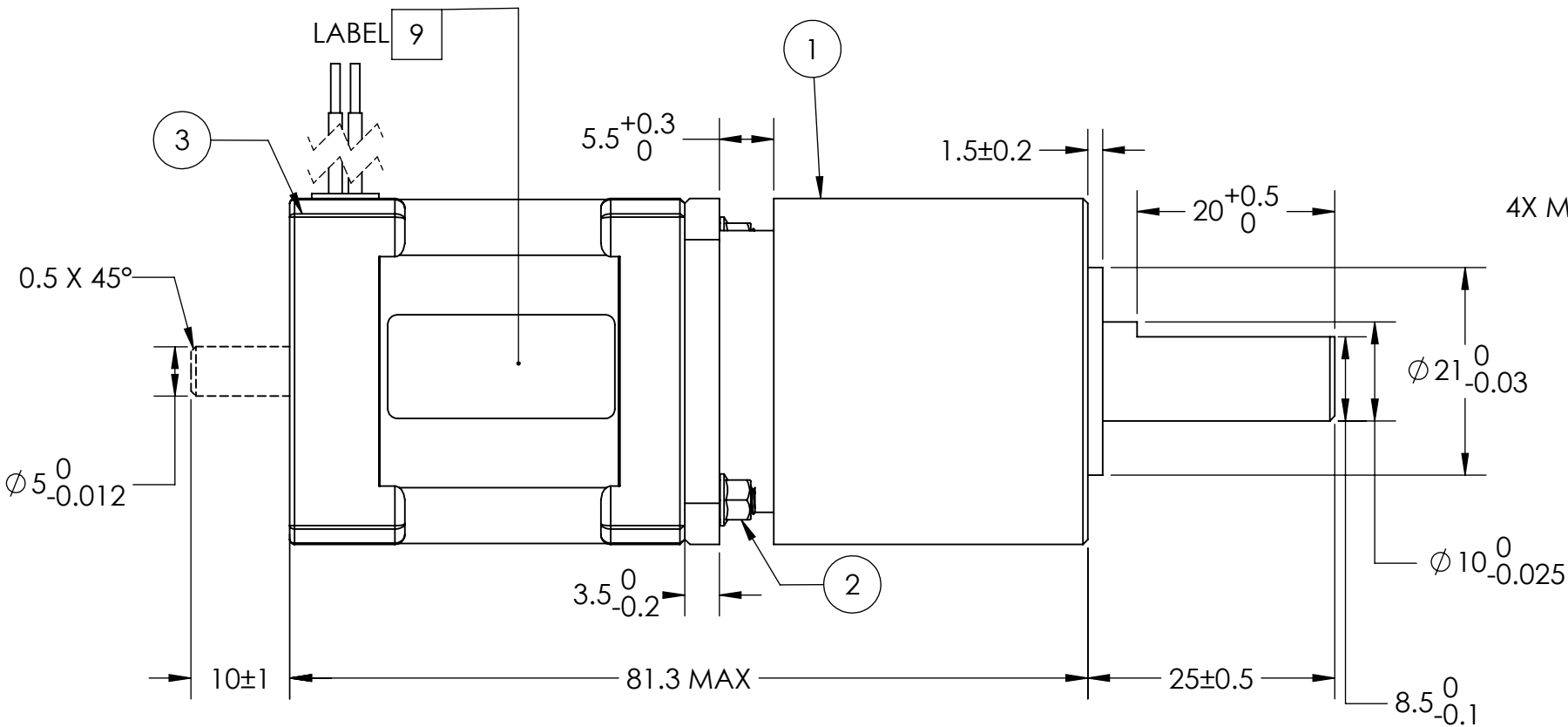
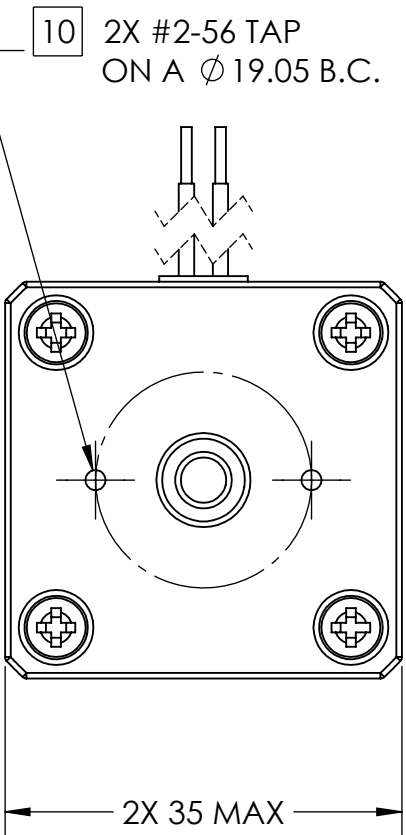
1

B

B


A

A



| GEARHEAD MATERIALS: | |
|----------------------|---------------------|
| GEARTRAIN: | Y15 (1213) STEEL |
| HOUSING: | 304 STAINLESS STEEL |
| INPUT/OUTPUT FLANGE: | LY12 ALUMINUM |
| OUTPUT SHAFT: | 40Cr STEEL |
| PINION: | Y15 (1213) STEEL |

| ITEM NO. | PART NUMBER | DESCRIPTION | QTY. |
|----------|----------------------------|--------------------|------|
| 1 | 35PH004.62-M1 | PH GEARHEAD | 1 |
| 2 | 11171924 Z/P OR EQUIVALENT | 4-40 NYLON LOCKNUT | 2 |
| 3 | 5014-042 10 | STEP MOTOR | 1 |

| | | | | | | | |
|---|---|-----------|-----------|---------|--|--|--|
|  <div>Applied Motion Products <small>A MOONS' COMPANY</small></div> <div>PROPRIETARY AND CONFIDENTIAL</div> <div>THE INFORMATION CONTAINED IN THIS DRAWING IS THE SOLE PROPERTY OF APPLIED MOTION PRODUCTS. ANY REPRODUCTION IN PART OR AS A WHOLE WITHOUT THE WRITTEN PERMISSION OF APPLIED MOTION PRODUCTS IS PROHIBITED.</div> | UNLESS OTHERWISE SPECIFIED: DIMENSIONS ARE IN MILLIMETERS TOLERANCES: ANGULAR: ± 0.5 ONE PLACE DECIMAL ± 0.25 TWO PLACE DECIMAL ± 0.13 THIRD ANGLE PROJECTION | | NAME | DATE | TITLE: <div>STEPPER MOTOR W/ GEARHEAD</div> | | |
| | MATERIAL | DRAWN | Y. LAPNET | 1/28/22 | | | |
| | FINISH | CHECKED | R. BUI | 1/31/22 | SIZE <div>B</div> DWG. NO. <div>5014-042-G004</div> REV <div>B</div> | | |
| | DO NOT SCALE DRAWING | COMMENTS: | | | | | |
| | | | | | | | |

4

3

2

1