

# STAC5 SKU Reduction Product Change Notification



## Issue Date:

26 March 2021

## Reason for Change

Reducing Complexity of Product Offering

## Products Affected

1. STAC5-S-N120
2. STAC5-S-E120
3. STAC5-Q-N120
4. STAC5-Q-E120
5. STAC5-IP-N120
6. STAC5-S-N220
7. STAC5-S-E220
8. STAC5-Q-N220
9. STAC5-Q-E220
10. STAC5-IP-N220

## Change Details

The STAC5 products listed above are being removed from our E-commerce site for small order quantities. The table below shows the part numbers being removed from low quantity sales and the recommended replacement part numbers.

Old Product	Replaced By
STAC5-S-N120 →	STAC5-IP-E120
STAC5-S-E120 →	
STAC5-Q-N120 →	
STAC5-Q-E120 →	
STAC5-IP-N120 →	
STAC5-S-N220 →	STAC5-IP-E220
STAC5-S-E220 →	
STAC5-Q-N220 →	
STAC5-Q-E220 →	
STAC5-IP-N220 →	

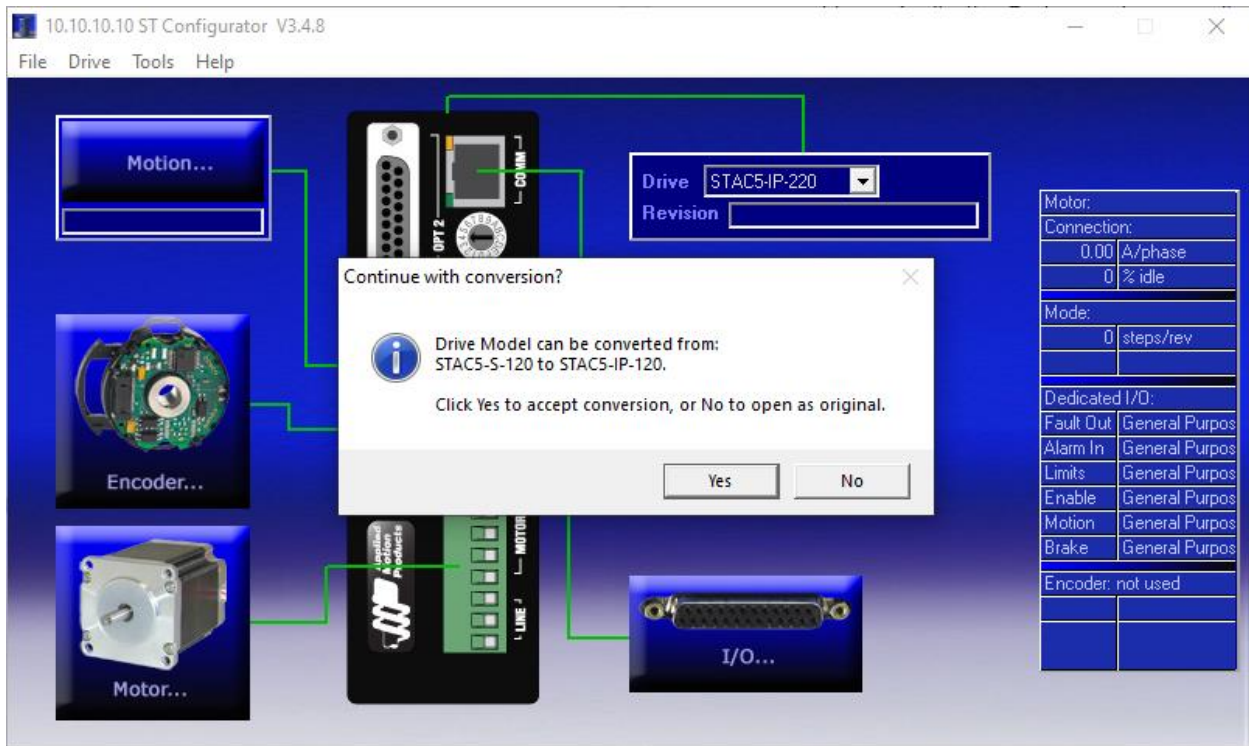
In all cases, the recommended replacement will be pin-to-pin compatible with the new model. Support for Q programming, and support for encoder feedback are now available as standard, although they are not required to be utilized if not needed.

# STAC5 SKU Reduction Product Change Notification



## Software Update

ST Configurator has been updated (from v3.4.8) and includes a file conversion utility to assist in converting configuration files from the archived models into the newer models. This tool can be accessed from the *File* menu under the *Open As* menu item. The file's model number will be automatically detected, and you will be prompted to convert the file into the new drive model.



The latest version of ST Configurator can be downloaded at [www.applied-motion.com](http://www.applied-motion.com). Versions 3.4.8 and higher support the STAC5 file conversion tool.

## Ordering Older Models

Older, archived models are still available and can be ordered with a minimum order quantity of 50 units.

## Next Steps

For questions about this change, or any other technical questions, please reach out to our Application Engineers at [www.applied-motion.com](http://www.applied-motion.com) or by phone at (800) 525-1609.