

4

3

2

1

MOTOR SPECIFICATIONS:

FRAME SIZE:	NEMA 11	ROTOR INERTIA (g-cm ² /oz-in ²):	8.97/4.9E-02 NOM
STEP ACCURACY (°):	±0.09	INSULATION CLASS:	B (130°C)
STEP ANGLE (°):	1.8	BEARINGS:	ABEC 3, DOUBLE SHIELDED
INPUT VOLTAGE (VDC):	15 - 30	APPROVALS:	CE, RoHS

GEARMOTOR SPECIFICATIONS:

TEMP. RISE (°C):	80 MAX	TOTAL WEIGHT (±10g/±0.35oz):	184/6.49
OPERATING AMB. TEMP. RANGE (°C):	0 to +85	RELATIVE HUMIDITY RANGE (%):	90 NON-CONDENSING
STORAGE TEMP. RANGE (°C):	0 to +40		

GEARHEAD SPECIFICATIONS:


RATIO:	12.76:1	EFFICIENCY (%):	81
MAX TORQUE CONTINUOUS (Nm/oz-in):	2/283.2	BACKLASH (°):	≤1.8
MAX TORQUE (Nm/oz-in):	3/424.8	MAX RADIAL LOAD (N/lbf):	≤20/4.49
MAX INPUT SPEED (RPM):	6000	MAX AXIAL LOAD (N/lbf):	≤20/4.49

REVISIONS

ECO #	REV.	DESCRIPTION	DATE	APPROVED
7935	A	INITIAL RELEASE	7/2/18	J. KORDIK
8161	B	REVISE FROM L1 TO L2	3/8/19	J. KORDIK
8758	C	REDRAWN IN SOLIDWORKS	4/18/22	L. LIU

NOTES, UNLESS OTHER WISE SPECIFIED:

1.
- THIS ASSEMBLY IS MANUFACTURED IN COMPLIANCE WITH THE CURRENT EU RoHS DIRECTIVE.
2.
- ALL SPECIFICATIONS AND OPERATING INSTRUCTIONS CAN BE FOUND AT APPLIED-MOTION.COM.
- 3
- CONNECTOR FOR POWER, I/O AND COMMUNICATION. USE INCLUDED CABLE 3004-319.

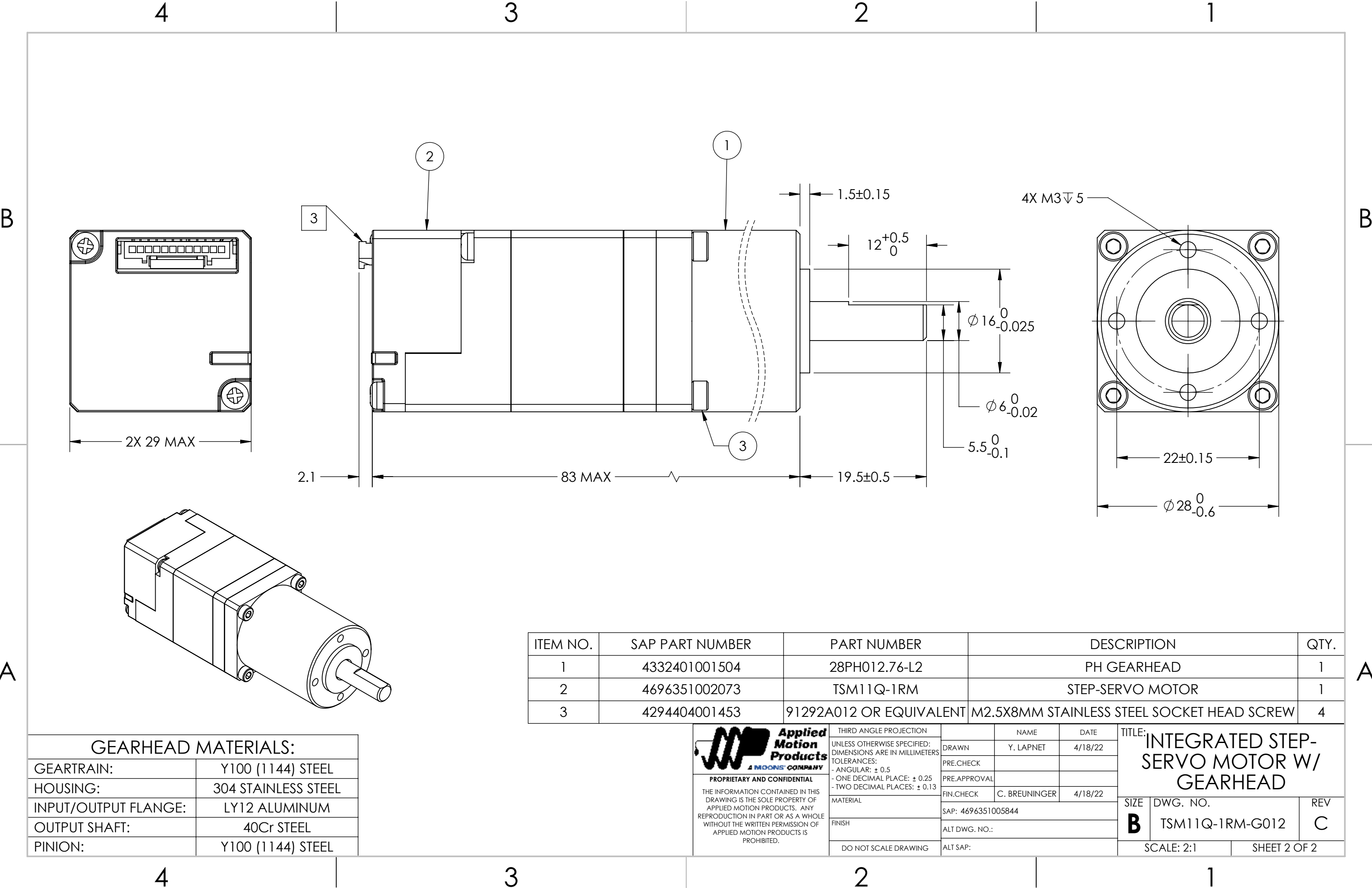
 APPLIED MOTION PRODUCTS <small>A MOONS' COMPANY</small> PROPRIETARY AND CONFIDENTIAL THE INFORMATION CONTAINED IN THIS DRAWING IS THE SOLE PROPERTY OF APPLIED MOTION PRODUCTS. ANY REPRODUCTION IN PART OR AS A WHOLE WITHOUT THE WRITTEN PERMISSION OF APPLIED MOTION PRODUCTS IS PROHIBITED.	THIRD ANGLE PROJECTION		NAME	DATE	TITLE: INTEGRATED STEP-SERVO MOTOR W/ GEARHEAD		
	UNLESS OTHERWISE SPECIFIED: DIMENSIONS ARE IN MILLIMETERS	DRAWN	Y. LAPNET	4/18/22			
	TOLERANCES:	PRE.CHECK					
	- ANGULAR: ± 0.5	PRE.APPROVAL					
	- ONE DECIMAL PLACE: ± 0.25	FIN.CHECK	C. BREUNINGER	4/18/22	SIZE	DWG. NO.	REV
	- TWO DECIMAL PLACES: ± 0.13				B	TSM11Q-1RM-G012	C
MATERIAL	SAP: 4696351005844						
FINISH	ALT DWG. NO.:						
DO NOT SCALE DRAWING	ALT SAP:			SCALE: 2:1		SHEET 1 OF 2	

4

3

2

1



GEARHEAD MATERIALS:	
GEARTRAIN:	Y100 (1144) STEEL
HOUSING:	304 STAINLESS STEEL
INPUT/OUTPUT FLANGE:	LY12 ALUMINUM
OUTPUT SHAFT:	40Cr STEEL
PINION:	Y100 (1144) STEEL

Applied Motion Products
A MOONS' COMPANY
PROPRIETARY AND CONFIDENTIAL
THE INFORMATION CONTAINED IN THIS DRAWING IS THE SOLE PROPERTY OF APPLIED MOTION PRODUCTS. ANY REPRODUCTION IN PART OR AS A WHOLE WITHOUT THE WRITTEN PERMISSION OF APPLIED MOTION PRODUCTS IS PROHIBITED.

THIRD ANGLE PROJECTION
UNLESS OTHERWISE SPECIFIED:
DIMENSIONS ARE IN MILLIMETERS
TOLERANCES:
- ANGULAR: ± 0.5
- ONE DECIMAL PLACE: ± 0.25
- TWO DECIMAL PLACES: ± 0.13
MATERIAL
FINISH
DO NOT SCALE DRAWING

	NAME	DATE
DRAWN	Y. LAPNET	4/18/22
PRE.CHECK		
PRE.APPROVAL		
FIN.CHECK	C. BREUNINGER	4/18/22
SAP:	4696351005844	
ALT DWG. NO.:		
ALT SAP:		

TITLE:		
INTEGRATED STEP-SERVO MOTOR W/ GEARHEAD		
SIZE	DWG. NO.	REV
B	TSM11Q-1RM-G012	C
SCALE: 2:1		SHEET 2 OF 2