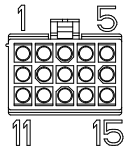


REVISIONS			
REV	DESCRIPTION	DATE	APPROVED
A	INITIAL RELEASE ECO 7005	6/10/14	J KORDIK
B	ADD LABEL ECO 7060	9/15/14	J KORDIK
C	REVISE SPEC PER ECO 7205	5/8/15	J Kordik
D	ADD UL TO LABEL PER ECO 7330	10/12/15	J KORDIK
E	SPEC REVISED PER ECO 7510	10/19/16	J KORDIK

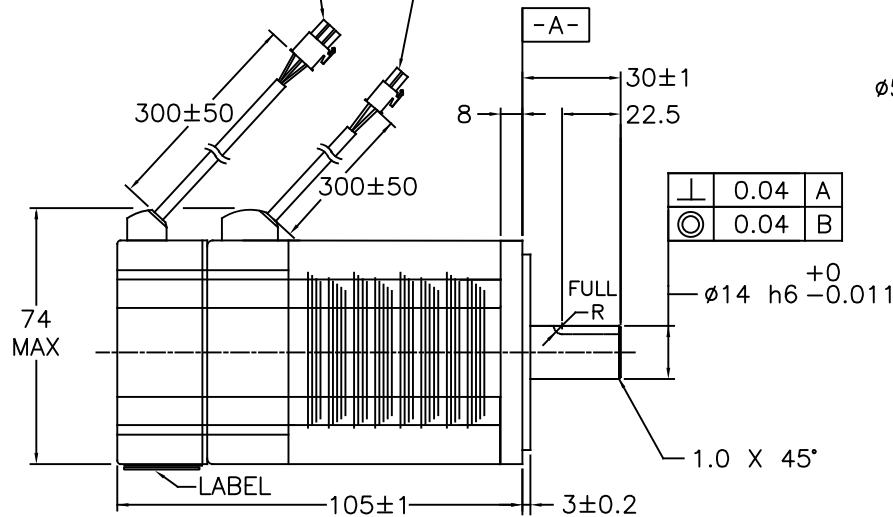
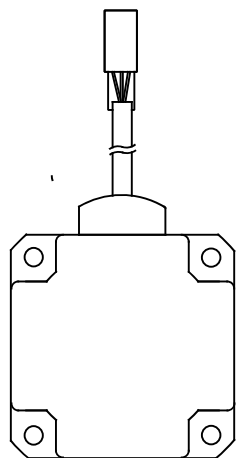
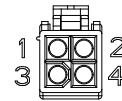
### ENCODER CONNECTOR

CONNECTOR: AMP 172171-1  
770835-1 contacts (strip)  
VIEWING MATING END

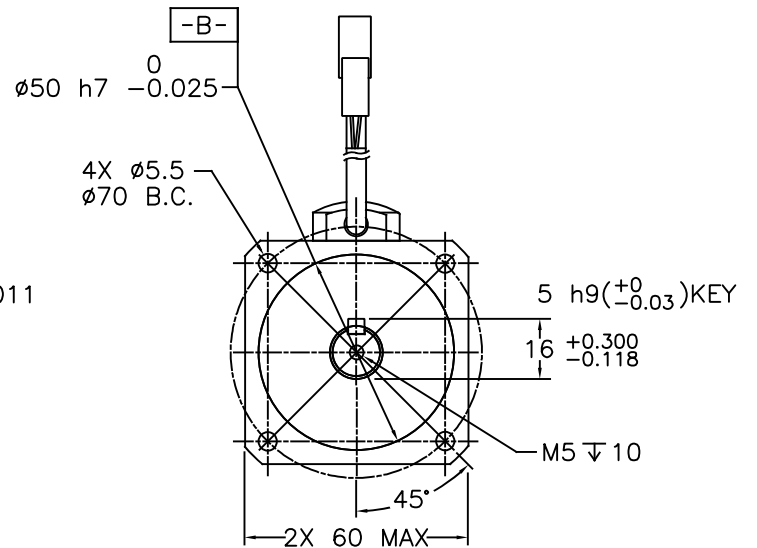


### MOTOR POWER CONNECTOR

CONNECTOR: AMP 172167-1  
170360-1 contacts (strip)  
VIEWING MATING END

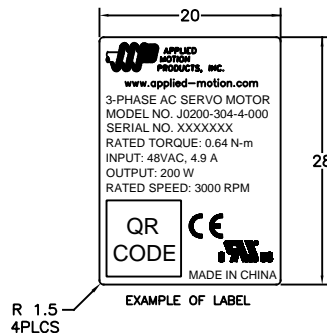


$\frac{L}{\phi}$	0.04	A
$\frac{\phi}{\phi}$	0.04	B



ENCODER CONNECTION TABLE		
PIN	LEAD COLOR	SIGNAL
1	RED	+5V
2	BLACK	GROUND
3	BROWN	U+
4	BROWN/BLACK	U-
5	GRAY	V+
6	GRAY/BLACK	V-
7	WHITE	W+
8	WHITE/BLACK	W-
9	BLUE/BLACK	A+
10	BLUE	A-
11	GREEN	B+
12	GREEN/BLACK	B-
13	YELLOW	Z+
14	YELLOW/BLACK	Z-
15	SHIELD	SHIELD

MOTOR CONNECTION TABLE		
PIN	LEAD COLOR	SIGNAL
1	RED	PHASE U
2	YELLOW	PHASE V
3	BLUE	PHASE W
4	YELLOW/GREEN	GROUND



R 1.5  
4PLCS

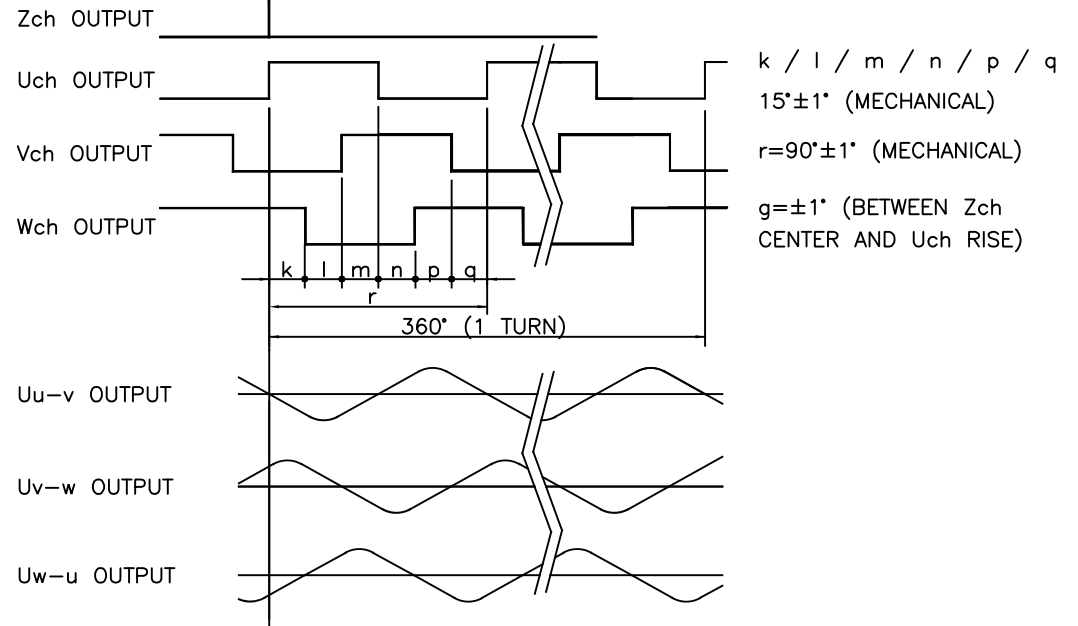
#### NOTES: UNLESS OTHERWISE SPECIFIED

1. A SHAFT SEAL IS SHIPPED WITH MOTOR, BUT NOT INSTALLED.
2. TIMING LOGIC IS CCW AS VIEWED FROM FRONT SHAFT.
3. MOTOR IS IP65, EXCEPT SHAFT OPENING AND CABLE CONNECTOR.
4. INSTALL INDOORS, AWAY FROM DIRECT SUNLIGHT AND FLAMMABLE GASES.
5. 1000M MAX ALTITUDE.

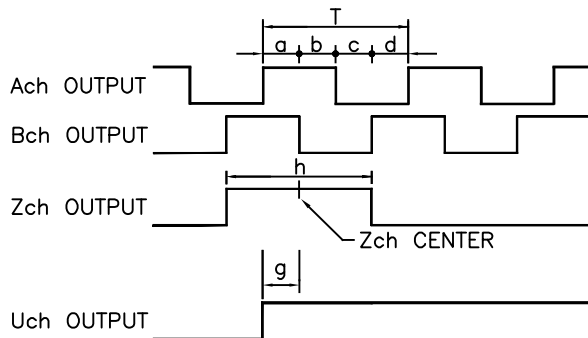
TOLERANCES		THIRD ANGLE PROJECTION		APPLIED MOTION PRODUCTS, INC.	
DECIMALS: MM (INCH)				<b>AC SERVO MOTOR</b>	
X.XXX = ±0.013 (.005)		APPROVALS			
X.XX = ±0.25 (.01)		DRAWN <i>R.JONEZ</i>		5/19/14	REV
X.X = ±2.5 (0.1)		CHECKED		B	J0200-304-4-000
ANGLES:		APPROVED		SCALE: NONE	SHEET 1 OF 2
MACH. = ±.5°					
CHAM. = ±5°					
COMPUTER DATA					
BASE DRAWING					

AC SERVO MOTOR SPECIFICATION – PERMANENT MAGNET 8 POLES		
INPUT POWER SUPPLY	VDC	48
RATED OUTPUT	W	200
VOLTAGE CONSTANT	V(rms)/K(rpm)±10%	7.9
RATED WINDING CURRENT	A (rms)	5.2
PEAK WINDING CURRENT	A (rms)	15.6
WINDING RESISTANCE	V ±10%@20°C	0.67 LINE-TO-LINE
WINDING INDUCTANCE	mH ±20%	2 LINE-TO-LINE
RATED TORQUE	Nm(kgf-cm)	0.64(6.52)
PEAK TORQUE	Nm(kgf-cm)	1.9(19.37)
TORQUE CONSTANT	Nm/A(rms)±10%	0.125
RATED SPEED	rpm/min	3000
MAXIMUM SPEED	rpm/min	6000
WEIGHT	KG (LBS)	1.1(2.3)
INSULATION CLASS		B 130°C
ENCODER RESOLUTION		2500 LINES/REV.
SHAFT LOAD – AXIAL	N(MAX)	70 N/15LB
SHAFT LOAD – RADIAL	N(MAX)	200 N/45LB
MOTOR RATING	REF NOTE 3	IP65
AMBIENT TEMPERATURE	OPERATING	0 TO 40°C
AMBIENT TEMPERATURE	STORAGE	-20 TO 80°C
AMBIENT HUMIDITY MAX		85%
INERTIA – WITH ENCODER	kg m <sup>2</sup>	0.0000165

**TIMING LOGIC / ENCODER SIGNALS**  
(NOT TO SAME SCALE AS OTHER DETAIL)



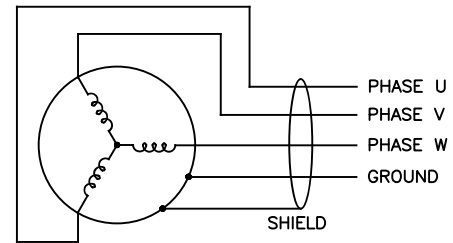
**TIMING LOGIC / ENCODER SIGNALS**




$$T = \frac{360 \text{ DEGREES}}{2500C/T}$$

$$a, b, c, d = T/4 \pm T/8$$

$$h = T \pm T/2$$



CONTRACT NO.		 <b>APPLIED MOTION PRODUCTS, INC.</b>	
APPROVALS	DATE		
DRAWN	<i>R. JONEZ</i>	5/19/14	<b>SERVO MOTOR SPECIFICATIONS</b>
CHECKED			
APPROVED			
APPROVED			
B	FSCM NO.	DWG NO.	REV
		J0200-304-4-000	E
SCALE: NONE		SHEET 2 OF 2	